

Journal Pre-proof



Coronary and total thoracic calcium scores predict mortality and provides pathophysiologic insights in COVID-19 patients

Francesco Giannini, Marco Toselli, Anna Palmisano, Alberto Cereda, Davide Vignale, Riccardo Leone, Valeria Nicoletti, Chiara Gnasso, Alberto Monello, Marco Manfrini, Arif Khokhar, Alessandro Sticchi, Andrea Biagi, Piergiorgio Turchio, Carlo Tacchetti, Prof., Giovanni Landoni, Prof., Edda Boccia, Gianluca Campo, Alessandra Scoccia, Francesco Ponticelli, Gian Battista Danzi, Marco Loffi, Margherita Muri, Gianluca Pontone, Daniele Andreini, Elisabetta Maria Mancini, Gianni Casella, Gianmarco Iannopollo, Tommaso Nannini, Davide Ippolito, Giacomo Bellani, Camillo Talei Franzesi, Gianluigi Patelli, Francesca Besana, Claudia Costa, Luigi Vignali, Giorgio Benatti, Nicola Sverzellati, Prof., Elisa Scarnecchia, Francesco Paolo Lombardo, Fabio Anastasio, Mario Iannaccone, Paolo Giacomo Vaudano, Alberto Pacielli, Lucio Baffoni, Iljia Gardi, Elisabetta Cesini, Massimiliano Sperandio, Chiara Micossi, Caterina Chiara De Carlini, Cristiano Spreafico, Stefano Maggiolini, Pietro Andrea Bonaffini, Attilio Iacovoni, Sandro Sironi, Prof., Michele Senni, Evgeny Fominskiy, Francesco De Cobelli, Prof., Aldo Pietro Maggioni, Claudio Rapezzi, Prof., Roberto Ferrari, Prof., Antonio Colombo, Prof., Antonio Esposito, Prof.

PII: S1934-5925(21)00032-0

DOI: <https://doi.org/10.1016/j.jcct.2021.03.003>

Reference: JCCT 1526

To appear in: *Journal of Cardiovascular Computed Tomograph*

Received Date: 2 January 2021

Revised Date: 4 March 2021

Accepted Date: 6 March 2021

Please cite this article as: Giannini F, Toselli M, Palmisano A, Cereda A, Vignale D, Leone R, Nicoletti V, Gnasso C, Monello A, Manfrini M, Khokhar A, Sticchi A, Biagi A, Turchio P, Tacchetti C, Landoni G, Boccia E, Campo G, Scoccia A, Ponticelli F, Danzi GB, Loffi M, Muri M, Pontone G, Andreini D, Mancini EM, Casella G, Iannopollo G, Nannini T, Ippolito D, Bellani G, Franzesi CT, Patelli G, Besana F, Costa C, Vignali L, Benatti G, Sverzellati N, Scarnecchia E, Lombardo FP, Anastasio F, Iannaccone M, Vaudano PG, Pacielli A, Baffoni L, Gardi I, Cesini E, Sperandio M, Micossi C, De Carlini CC, Spreafico C, Maggiolini S, Bonaffini PA, Iacovoni A, Sironi S, Senni M, Fominskiy E, De Cobelli F, Maggioni

AP, Rapezzi C, Ferrari R, Colombo A, Esposito A, Coronary and total thoracic calcium scores predict mortality and provides pathophysiologic insights in COVID-19 patients, *Journal of Cardiovascular Computed Tomograph*, <https://doi.org/10.1016/j.jcct.2021.03.003>.

This is a PDF file of an article that has undergone enhancements after acceptance, such as the addition of a cover page and metadata, and formatting for readability, but it is not yet the definitive version of record. This version will undergo additional copyediting, typesetting and review before it is published in its final form, but we are providing this version to give early visibility of the article. Please note that, during the production process, errors may be discovered which could affect the content, and all legal disclaimers that apply to the journal pertain.

© 2021 Published by Elsevier Inc. on behalf of Society of Cardiovascular Computed Tomography

Coronary and total thoracic calcium scores predict mortality and provides pathophysiologic insights in COVID-19 patients

Running title: cardiovascular calcifications and COVID-19

Francesco Giannini^{1}, Marco Toselli^{1*}, Anna Palmisano^{2,3}, Alberto Cereda¹, Davide Vignale^{2,3}, Riccardo Leone^{2,3}, Valeria Nicoletti^{2,3}, Chiara Gnasso^{2,3}, Alberto Monello⁴, Marco Manfrini¹, Arif Khokhar¹, Alessandro Sticchi¹, Andrea Biagi⁴, Piergiorgio Turchio⁴, Prof. Carlo Tacchetti^{2,3}, Prof. Giovanni Landoni^{2,3}, Edda Boccia², Gianluca Campo⁵, Alessandra Scoccia⁵, Francesco Ponticelli¹, Gian Battista Danzi⁶, Marco Loffi⁶, Margherita Muri⁶, Gianluca Pontone⁷, Daniele Andreini⁷, Elisabetta Maria Mancini⁷, Gianni Casella⁸, Gianmarco Iannopolo⁸, Tommaso Nannini⁸, Davide Ippolito⁹, Giacomo Bellani⁹, Camillo Talei Franzesi⁹, Gianluigi Patelli¹⁰, Francesca Besana¹⁰, Claudia Costa¹⁰, Luigi Vignali¹¹, Giorgio Benatti¹¹, Prof. Nicola Sverzellati¹¹, Elisa Scarnecchia¹², Francesco Paolo Lombardo¹², Fabio Anastasio¹², Mario Iannaccone¹³, Paolo Giacomo Vaudano¹³, Alberto Pacielli¹³, Lucio Baffoni^{1,14}, Iljia Gardi¹, Elisabetta Cesini¹⁴, Massimiliano Sperandio¹⁵, Chiara Micossi¹⁵, Caterina Chiara De Carlini¹⁶, Cristiano Spreafico¹⁶, Stefano Maggiolini¹⁶, Pietro Andrea Bonaffini¹⁷, Attilio Iacovoni¹⁷, Prof. Sandro Sironi¹⁷, Michele Senni¹⁷, Evgeny Fominskiy², Prof. Francesco De Cobelli^{2,3}, Aldo Pietro Maggioni¹, Prof. Claudio Rapezzi^{1,5}, Prof. Roberto Ferrari¹, Prof. Antonio Colombo¹, Prof. Antonio Esposito^{2,3}*

**contributed equally*

Affiliations:

¹*GVM Care & Research Maria Cecilia Hospital Cotignola*

²*IRCCS San Raffaele Scientific Institute*

³*Vita-Salute San Raffaele University*

⁴*Guglielmo da Saliceto Hospital, Piacenza, Italy,*

⁵*Azienda Ospedaliero-Universitaria di Ferrara, Cona (FE), Italy*

⁶*Ospedale di Cremona, Cremona, Italy*

⁷*Centro Cardiologico Monzino IRCCS, Milano, Italy*

⁸*Ospedale Maggiore, Bologna, Italy*

⁹*San Gerardo Hospital, Monza, Italy,*

¹⁰*ASST Bolognini Hospital, Bergamo Est, Italy,*

¹¹*Parma University Hospital, Parma, Italy*

¹² *ASST Valtellina and Alto Lario, "Eugenio Morelli Hospital", Sondalo, Italy*

¹³*San Giovanni Bosco Hospital, ASL Città di Torino, Turin, Italy,*

¹⁴*Casa di Cura Villa dei Pini, Civitanova Marche, Italy*

¹⁵*ICC Istituto Clinico Casalpallocco, Rome, Italy,*

¹⁶*San L. Mandic Hospital, Merate Italy*

¹⁷*ASST Papa Giovanni XXIII, Bergamo, Italy*

Corresponding author

Francesco Giannini, MD

Interventional Cardiology Unit, GVM Care & Research Maria Cecilia Hospital

Via Corriera, 1, 48033 Cotignola, Ravenna, Italy

Phone number: +39-3337535151

E-mail address: giannini_fra@yahoo.it

The authors have no conflict of interest to declare. No funding.

Abstract

Background. Coronavirus disease 2019 (COVID-19) has spread worldwide determining dramatic impacts on healthcare systems. Early identification of high-risk parameters is required in order to provide the best therapeutic approach. Coronary, thoracic aorta and aortic valve calcium can be measured from a non-gated chest computer tomography (CT) and are validated predictors of cardiovascular events and all-cause mortality. However, their prognostic role in acute systemic inflammatory diseases, such as COVID-19, has not been investigated.

Objectives The aim was to evaluate the association of coronary artery calcium and total thoracic calcium on in-hospital mortality in COVID-19 patients.

Methods 1093 consecutive patients from 16 Italian hospitals with a positive swab for COVID-19 and an admission chest CT for pneumonia severity assessment were included. At CT, coronary, aortic valve and thoracic aorta calcium were qualitatively and quantitatively evaluated separately and combined together (total thoracic calcium) by a central Core-lab blinded to patients' outcomes.

Results Non-survivors compared to survivors had higher coronary artery [Agatston (467.76 ± 570.92 vs 206.80 ± 424.13 mm², $p < 0.001$); Volume (487.79 ± 565.34 vs 207.77 ± 406.81 , $p < 0.001$)], aortic valve [Volume (322.45 ± 390.90 vs 98.27 ± 250.74 mm², $p < 0.001$); Agatston (337.38 ± 414.97 vs 111.70 ± 282.15 , $p < 0.001$)] and thoracic aorta [Volume (3786.71 ± 4225.57 vs 1487.63 ± 2973.19 mm², $p < 0.001$); Agatston (4688.82 ± 5363.72 vs 1834.90 ± 3761.25 , $p < 0.001$)] calcium values. Coronary artery calcium (HR 1.308; 95% CI, 1.046 - 1.637, $p = 0.019$) and total thoracic calcium (HR 1.975; 95% CI, 1.200 - 3.251, $p = 0.007$) resulted to be independent predictors of in-hospital mortality.

Conclusion. Coronary, aortic valve and thoracic aortic calcium assessment on admission non-gated CT permits to stratify the COVID-19 patients in-hospital mortality risk.

Keywords. COVID-19; coronary artery; aortic valve; thoracic aorta; calcification; calcium score; in-hospital mortality.

Journal Pre-proof

1.0 Introduction

Since the first cases observed in Wuhan, China in December 2019, the Coronavirus disease 2019 (COVID-19) has spread worldwide with consequent dramatic impacts on healthcare systems, global economy and social behavior¹.

The high rate of COVID-19-related mortality and the uncertainty of the pandemic duration demand for the early identification of high-risk subsets of patients beyond traditional clinical parameters. To date, advanced age and male gender have been identified as independent predictors of mortality in COVID-19 patients. Elevated inflammatory markers and severity of lung involvement also correlate with adverse prognosis². Moreover, several data suggest a relevant role of cardiovascular comorbidities in determining COVID-19 patients' outcome^{3,4,5,6}. Chest computed tomography (CT), already widely utilized for COVID-19 pneumonia diagnosis, might provide additional information beyond lung disease, such as coronary arteries calcium evaluation.^{7,8,9} Coronary, thoracic aorta and aortic valve calcium burden can be quantitatively measured from a non-gated chest CT and are validated long-term predictors of cardiovascular events and all-cause mortality.^{10,11,12} However, their prognostic role in the context of an acute and systemic inflammatory disease, such as

COVID-19, has not been investigated.

The aim of our study was to evaluate the potential value of coronary artery calcium (CAC) and of total thoracic calcium burden (coronary artery calcium, thoracic aorta and aortic valve calcium) in prediction of in-hospital mortality of COVID-19 patients.

2.0 Methods

2.1 STUDY POPULATION

Data were derived from the multicenter, retrospective and observational *sCORE COVID-19* (calcium score for **COVID-19 Risk Evaluation**) *registry*, consisting of 16 participating hospitals located in five Italian regions heavily affected by the pandemic (Lombardy, Piedmont, Emilia-Romagna, Marche and Lazio) (see Methods in the supplement - Participating Centers). All consecutive patients with a positive qualitative polymerase-chain-reaction assay for SARS-CoV-2 and a non-contrast chest CT at admission for pneumonia severity assessment during the study period (March 1st – April 20th, 2020) were included. CT had been performed in those patients with the clinical suspicion of pneumonia.

All institutions were second and third level centers (public or private accredited to the National Health System) directly involved in the COVID-19 emergency. The study was approved by the local ethical committees of each institution.

2.2 CLINICAL, LABORATORY AND RADIOLOGICAL DATA

Clinical and laboratory data as well as radiological images were collected by each center. Radiological images were sent to the central core-lab for image analysis (Experimental Imaging center, IRCCS, Ospedale San Raffaele, Milano). Clinical and Radiological databases were integrated and analyzed by the coordinating center (Maria Cecilia Hospital, GVM Care & Research, Cotignola). Demographic characteristics (age, gender and body mass index), cardiovascular risk factors (hypertension, diabetes) and comorbidities (chronic lung disease, chronic kidney disease, active malignancy, peripheral artery disease), as well as history of coronary artery disease including previous percutaneous and/or surgical revascularization across the study population were collected. Laboratory data included baseline admission values of hemoglobin, white blood cells count, creatinine, high sensitivity troponin I (HS-TnI), lactate dehydrogenase (LDH), C-

reactive protein (CRP). Interleukin-6 and D-dimer at peak were also assessed. Major adverse cardiac and cerebrovascular events (MACCE) were recorded as well as time frames between hospital admission, CT and in-hospital outcome (death or discharge) were calculated.

Chest CT scans were analyzed by three expert cardio-thoracic radiologists of the core-lab blinded to patients' clinical data. CT scans were acquired with a standard non-gated chest CT protocol, always on multidetector scanners with at least 16 detector rows⁹.

For lung parenchyma evaluation, CT were reconstructed at each site with sharp kernel and visualized at the core lab using a standard lung window (width 1400 HU; center -450 HU).

Analyzed lung parameters included: 1) well aerated lung volume (V-WAL) in cm³, automatically quantified using a certified commercial software (IntelliSpace v 8.0, Philips, The Netherlands) as the sum of voxels with densities between -950 HU and -740 HU, for the exclusion of emphysema (density below -950 HU) and pneumonia (density above -740 HU), respectively¹³; 2) semi-quantitative pneumonia scoring [no pneumonia (0%); minimal pneumonia (1 - 25%); mild pneumonia (26 - 50%); moderate pneumonia (51 - 75%); severe pneumonia (76 - 100%)¹⁴.

For calcium quantification, CT were reconstructed at each site with a soft kernel, transferred to the core lab and then reformatted at a standard slice thickness of 2.5 mm without overlap nor gap, and visualized using a standard mediastinal window (width 350 HU; center 40 HU).

Patients with coronary stenting were excluded for the quantitative assessment of coronary calcium, for impaired measurement.

Coronary artery calcifications were visually assessed (presence/absence and number of involved vessels) and quantitatively computed. Quantification of coronary artery (CAC), thoracic aorta (TAC) and aortic valve calcium (AVC) was performed both with Agatston calcium scoring (CS)¹⁵ and calcium volume (CV) methodology¹⁶, semi-automatically, on a

commercial software (IntelliSpace v 8.0, Philips, The Netherlands), as follow: vascular calcification were automatically detected as a group of adjacent pixels with an area ≥ 1 mm² and a density above 130 HU. Then, an experienced cardio-thoracic radiologist labeled every calcification as belonging either to coronary arteries (left main, left anterior descending, left circumflex, or right coronary artery), thoracic aorta or aortic valve. The total thoracic calcium (TTC) volume was also calculated as the sum of CAC, TAC and AVC volumes.

2.3 STATISTICAL ANALYSIS

Descriptive statistics were performed on the overall population. Continuous variables are presented as mean \pm standard deviation or median [interquartile range]. Categorical variables as counts and proportions (%). For continuous variables, the differences were compared between groups using the T-test and the one-way analysis of variance or the Wilcoxon rank sum test and the Kruskal Wallis test, for parametric and non-parametric data, respectively. Only variables with missing values below 10% of the total number of observations have been retained for downstream analysis in the analysis dataset. Multivariate imputation by chained equations has been carried out on these variables in order to reduce missing data bias. Continuous variables have been standardized and outliers removed. In this study, exposition to risk factor was considered to be CAC and TTC. In order to assess their role as risk factors, Cox regression analysis was performed for CAC and TTC as regressors considering death as the outcome. The follow-up time was 30 days from hospitalization.

Results were reported as hazard ratios (HR) with associated 95% confidence intervals (CIs). In order to identify the confounders, firstly a linear regression was performed considering CAC and TCC as dependent and all the patients' clinical features, demographics, laboratory data collected and all remaining CT parameters, as predictor

variables. Secondly, all clinical data, demographics, laboratory data and CT parameters was regressed toward the outcome (death). The results were reported as standardized beta-values and associated p-values (Supplementary Table 2). All baseline significant variables ($p < 0.05$) were included in the adjusted full multivariate Cox regression model (age, gender, white blood cell, creatinine, well aerated lung volume and arterial hypertension, as reported in tables 2 and 3). The variance enrolment correlation among the centers was considered. The multicollinearity was examined using the variance inflation factor (VIF) and variables with $VIF > 3$ were excluded by the same multivariable model. For CAC and TTC, a full model was built without including variables testing the same clinical set. Variable selection was performed by a backward stepwise algorithm based on Akaike's information criterion minimization. Cross-validation was performed to validate the models obtained. The p-value related to the likelihood ratio was calculated, along with Harrel's C-index. The "optimal" cut-off value of CAC and TTC for predicting death was calculated maximizing the odds ratio or the sum of sensitivity and specificity respectively, using receiver-operating characteristic (ROC) curve analysis. Two binary variables derived from the calculated cut-off were employed in multivariable Cox regression model with robust variance. The results were reported as hazard ratios with associated 95% confidence intervals (CIs). Survival curves were plotted as cumulative hazard stratifying by risk factor reporting the number of patients at risk at each time point and the p-value of the log-rank test for the differences in the survival proportions. Predictive model capability was assessed by using time dependent AUC receiver operating characteristic analysis (AUC-tdROC) and sensibility and specificity estimation. Moreover, we evaluated the model discrimination capability together with Bayesian information criterion (BIC) variation. In order to comparing the mortality rate in absences of MACCE, a grouped by MACCE univariable analysis of patients clinical features together with inflammatory markers and anamnestic and laboratory data was carried out.

The analysis was performed by (MM) with R version 3.5.1 (R Foundation for Statistical Computing, Vienna, Austria).

3.0 Results

The study population included 1093 hospitalized patients with confirmed COVID-19 infection, admission chest CT and no history of coronary stenting. Table 1 shows the demographic characteristics and comorbidities of the two groups (survivors and non-survivors) and the overall population. Globally, the median age was 68 years (IQR 58-76) and 742 patients (68.3%) were male. Regarding cardiovascular risk factors, 590 patients (54.8%) had arterial hypertension and 178 (16.5%) diabetes mellitus. Preexisting cardiovascular disease included coronary artery disease (44, 6.6%) with a history of previous surgical revascularization in 2.3%. Other comorbidities included chronic lung disease (107, 10%), chronic kidney disease (49, 7.0%) and active malignancy (51, 4.7%). Orotracheal intubation was required in 155 patients (14.2%). In-hospital death occurred in 211 patients (19.3%). Median times from hospital admission to discharge or to in-hospital death were 14 (IQR 8-21) and 7 days (IQR 4-14), respectively. Seventy-eight patients with coronary stents were excluded from the analyses. Their in-hospital mortality rate was higher than that of patients without coronary stents (41.0% vs 19.3%, $p < 0.001$), while the rate of orotracheal intubation was not different between the two groups (data shown in Supplementary Table 1).

3.1 COMPARISON BETWEEN SURVIVORS AND NON-SURVIVORS GROUPS

Non-survivors were older [median age 77 (IQR 70-82) years vs 64 (IQR 57-74)] and had a higher prevalence of hypertension (72% vs 50.7%, $p < 0.001$), diabetes (23.7% vs 14.8%, $p = 0.003$), chronic lung disease (17.4% vs 8.2%, $p < 0.001$), and peripheral artery disease

(10.1 % vs 3.9%, $p=0.001$). Coronary artery disease was also more prevalent among non-survivors (17.4% vs 4.9%, $p<0.001$), including previous history of surgical revascularization (5.7% vs 1.8%, $p=0.038$).

Compared to survivors, non-survivors had higher admission creatinine levels [1.23 (0.97, 1.74) vs 0.95 (0.8, 1.17) mg/dl, $p<0.001$], LDH [460.50 (323.00, 603.50) vs 354.00 (261.25, 460.50) mg/dl, $p<0.001$], CRP [14.30 (8.37, 21.40) vs 10.80 (4.90, 19.60) mg/L, $p=0.001$] and HS-Tnl [31.15 (9.65, 175.97) vs 10.00 (5.30, 18.30) ng/L, $p=0.001$], but lower hemoglobin levels [13.2 (11.9, 14.4) vs 13.9 (12.5, 14.9) g/dl, $p<0.001$]. Peak D-dimer [3.06 (1.16, 20.00) vs 1.74 (0.72, 4.82) ng/ml, $p=0.005$] and Interleukin-6 [141.00 (68.20, 368.70) vs 53.70 (23.27, 211.25) pg/ml, $p=0.004$] values were higher in non-survivors compared to survivors.

Non-survivors had a higher pneumonia extension and lower well aerated lung volume (1790.26 ± 1109.39 cm³ vs 2528.42 ± 1371.50 cm³, $p<0.001$). They also experienced a higher rate of MACCE ($p=0.001$). In detail, the onset of stroke determined a slight but not significant increase of mortality compared to patients not experiencing MACCE (25% vs 19%, $p=0.45$), while patients experienced acute myocardial infarction had higher mortality (83% vs 19%, $p<0.001$), despite non-significant differences in age, gender, clinical risk factor and respiratory lung reserve. Pulmonary and peripheral thromboembolic complication were not associated to increased mortality rate ($p=0.64$ and $p=0.14$ respectively).

The rate of orotracheal intubation was not significantly different between non survivors and survivors (17.1% vs 13.5%, $p=0.188$).

3.2 IMPACT OF CORONARY ARTERY CALCIUM ON IN HOSPITAL MORTALITY

Compared to survivors, non-survivors were more likely to have coronary calcification (85.3% vs 62.8%, $p<0.001$), in more coronary arteries [2 (1, 3) vs 1 (0, 2), $p<0.001$] with a

higher CAC [mean values (\pm SD)] calculated with both Agatston score and volume [Agatston (467.76 ± 570.92 vs 206.80 ± 424.13 , $p < 0.001$); Volume (487.79 ± 565.34 vs 207.77 ± 406.81 mm³, $p < 0.001$)]. Pearson's product-moment correlation between Agatston score and volume was 0.976 (95% C.I. = 0.974-0.979, $p < 0.001$). Given that calcium volume had a higher hazard ratio compared to Agatston score at univariate analysis [HR 1.25; (95% CI 1.184 – 1.318, $p = 0.0001$) vs HR 1.192 (95% CI 1.137 - 1.25, $p = 0.001$)], coronary volume was used for further analyses. Univariate analysis is reported in Supplementary Table 3.

Receiver-operator characteristic curve analysis showed fair discrimination between survivors and non-survivors at a CAC volume of 335.48 mm³ (C-statistic of 0.803) (Supplementary Figure 1). At this value, the sensitivity and specificity for predicting in-hospital death were 96% and 33%, respectively. A total of 225 (20.5%) patients had CAC volume higher than the defined cut-off (CAC > 335.48 mm³) and 868 (79.4%) less or equal than the cut-off value (CAC \leq 335.48 mm³). The mortality rate was 38.2% and 14.4% respectively ($p < 0.001$). Table 4 shows a comparison between the two groups.

Table 2 shows the Cox proportional-hazards models for factors associated with in-hospital death. In the adjusted time-to-event analyses, CAC volume predicts in-hospital mortality together to older age, male gender, arterial hypertension, well aerated lung volume, elevated levels of white blood cells and creatinine (time dependent AUC=0.805). In particular, CAC volume > 335.48 mm³ predicted in-hospital death with hazard ratio equal to 1.308 (95% CI, 1.046 - 1.637, $p = 0.019$) (Figure 1).

3.3 IMPACT OF TOTAL CALCIUM THORACIC ON IN-HOSPITAL MORTALITY

Non-survivors group showed higher calcium volume and Agatston mean values (\pm SD) of aortic valve [Volume (322.45 ± 390.90 vs 98.27 ± 250.74 mm³, $p < 0.001$; Agatston 337.38 ± 414.97 vs 111.70 ± 282.15 , $p < 0.001$)] and thoracic aorta [Volume

(3786.71 ± 4225.57 vs 1487.63 ± 2973.19 mm³, $p < 0.001$); Agatston (4688.82 ± 5363.72 vs 1834.90 ± 3761.25 , $p < 0.001$)]. Mortality rates related to CAC, AVC and TAC were higher even after stratification for age < 70 years-old and ≥ 70 years-old (Figure 2).

Total thoracic calcium, defined as the total of CAC + AVC + TAC volumes, was calculated. The total thoracic calcium mean values (\pm SD) was significantly higher in non-survivors [4564.20 (± 4711.22) vs 1772.81 (± 3316.01) mm³, $p < 0.001$].

Receiver-operator characteristic curve analysis showed fair discrimination between survivors and non-survivors (C-statistic of 0.817) at a TTC of 1067.78 (Supplementary Figure 2). At this value, the sensitivity and specificity for predicting in-hospital death were 96% and 36%, respectively. The derived TTC optimal cut-off divided the population into two subgroups: a total of 675 patients had a higher TTC ($>$ cut-off) while 418 patients presented a lower TTC (\leq cut-off). Mortality rate was significantly higher in patient with higher TTC (35.4% vs 9.3%, p -value. < 0.001) (for details see Table 5).

Table 3 shows the Cox proportional-hazards models for factors associated with in-hospital death. In the adjusted time-to-event analyses, variables that were independently associated with higher in-hospital mortality were older age, male gender, total thoracic calcium, well aerated lung volume, elevated levels of white blood cells and creatinine (time dependent AUC=0.82) with an hazard ratio of 1.975 (95% CI, 1.200 - 3.251, $p=0.007$) for TTC. Figure 3.

4.0 Discussion

The major findings of our study are: (1) CAC score quantified with non-gated chest CT is an predictor of mortality among hospitalized COVID-19 patients; (2) coronary calcium volume and total thoracic calcium are associated to higher mortality rate; (3) coronary calcium volume and total thoracic calcium predict in-hospital mortality together to older

age, male gender, arterial hypertension, specific laboratory parameters (creatinine and white blood cells) and respiratory lung reserve at CT.

In our study 98.5% of the study population had a radiological diagnosis of pneumonia, which extension was at least moderate (>25% lung volume) in 69.3% of patients.^{14,17} The rates of orotracheal intubation and in-hospital mortality (14.2% and 20%, respectively) were in line with previous experiences.^{18,19}

To our knowledge, this is the first large study which demonstrates that CAC volumes is a predictor of in-hospital mortality in the setting of a systemic acute inflammatory disease, such as COVID-19 (HR 1.308, p=0.019). CAC is a well-established long-term imaging biomarker used to identify individuals at higher risk for cardiovascular events.^{20,21} The assessment of CAC on non-gated chest CT allows to quantify the coronary artery atherosclerosis with an objective and reproducible score, providing evidence of coronary artery disease also if previously clinically unknown. Although the study population had a low prevalence of coronary artery disease (6.6%), the presence of CAC was detected in a significant proportion of patients (67.2%), suggesting a subclinical disease.²²

Observational studies have reported the role of cardiovascular involvement (defined as endothelitis, micro- and macro-vascular thrombosis, pulmonary embolism and coronary acute events) in patients with COVID-19,^{23,24,25,26,27} which was associated to increased mortality, as also suggested by our data (83% of in-hospital mortality in case of acute myocardial infarction). Being associated to coronary artery disease, CAC behaves as a specific organ function biomarker associated to a higher mortality. In this regard, coronary calcifications have been related to myocardial ischemia, where COVID-19 disease may exacerbate the underlying condition.^{28,29}

Aortic valve and thoracic aorta calcifications were qualitatively assessed: both were strongly related to higher in-hospital mortality regardless of age and then subsequently included in the second multivariate analysis of mortality prediction. The extent of aortic

valvular calcification directly represents degenerative aortic valve stenosis. A dysfunctional valve could increase the susceptibility to systemic hypoxia, which is the typical clinical scenario of COVID-19 and respiratory distress.³⁰ On the other hand, thoracic aortic calcification reflects systemic atherosclerosis and is related to cardiovascular morbidity and mortality risks. Total thoracic calcium, defined as the combined CAC, AVC and TAC volumes emerged as an independent predictor of mortality with a hazard ratio of 1.9, even stronger than coronary CAC volume.

In our experience, as an element of novelty, calcium scores appear to be suitable outcome predictors of mortality in an infective disease. Patients with high CAC or TTC (> cut-off) experienced a higher rate of in-hospital death with respect to those with lower values (table 4 and table 5). Moreover, it is noteworthy to point out that patients with CAC > cut-off had higher incidence of acute myocardial infarction (3.5% vs 0.8%), and patients with high TCT (>cut-off) had higher incidence of stroke (4.9% vs 1.3%) as of acute myocardial infarction (1.8% vs 1%), both associated to higher in-hospital mortality rate (25% and 83% respectively vs 19% in patients without MACE).

Indeed, cardiovascular calcifications may represent a bystander of an impaired vascular reserve, both microvascular and endothelial, but also a sign of vascular senescence. Therefore, it can be considered an index of biological frailty, likely more accurate than age. Coronary artery calcium, as well as TAC, ACV and TTC can be quantified on non-gated chest CT performed in COVID-19 patients for lung assessment using commercial and widely available software. CAC and TTC may represent additional imaging biomarkers for risk stratification in COVID-19 patients, not requiring further biological costs and healthcare resources. The prognostic role of CAC and TTC could be also investigated in other acute inflammatory systemic syndromes.

Specific limitations in addition to those inherent to a retrospective study should be taken into consideration when interpreting our findings.

Our study population included only COVID-19 patients who underwent chest CT for lung assessment. Therefore, these findings are potentially not reflective of all COVID-19 patients. However, it is relevant to underline that all consecutive patients by each participating center were enrolled. Moreover, clinical, laboratory and outcome features of our study population were consistent to those previously reported in literature for COVID-19.¹⁸ Unfortunately, a risk stratification for patients requiring more intensive care is not addressed for selection bias and different protocols adopted in the overwhelmed participating hospitals.

Finally, inter-hospital variability was considered in multivariate analyses.

5.0 Conclusions

In conclusion, CAC and TTC, both obtained from non-gated chest CT performed for lung evaluation in COVID-19 patients, could be a powerful tool for risk stratification in COVID-19 patients. TTC, as the sum of CAC, TAC and AVC, is a radiological CT biomarker of systemic atherosclerosis and biologic frailty and resulted as a stronger predictor of mortality than CAC alone, in COVID-19 patients.

6.0 References

1. Phelan AL, Katz R, Gostin LO. The Novel Coronavirus Originating in Wuhan, China: Challenges for Global Health Governance. *JAMA*. 2020;323(8):709. doi:10.1001/jama.2020.1097
2. Zeng F, Huang Y, Guo Y, et al. Association of inflammatory markers with the severity of COVID-19: a meta-analysis. *International Journal of Infectious Diseases*. Published online May 2020:S1201971220303623. doi:10.1016/j.ijid.2020.05.055
3. Guo T, Fan Y, Chen M, et al. Cardiovascular Implications of Fatal Outcomes of Patients With Coronavirus Disease 2019 (COVID-19). *JAMA Cardiol*. Published online March 27, 2020. doi:10.1001/jamacardio.2020.1017
4. Driggin E, Madhavan MV, Bikdeli B, et al. Cardiovascular Considerations for Patients, Health Care Workers, and Health Systems During the Coronavirus Disease 2019 (COVID-19) Pandemic. *Journal of the American College of Cardiology*. Published online March 2020:S0735109720346374. doi:10.1016/j.jacc.2020.03.031
5. Esposito A, Palmisano A, Toselli M, et al. Chest CT-derived pulmonary artery enlargement at the admission predicts overall survival in COVID-19 patients: insight from 1461 consecutive patients in Italy. *Eur Radiol*. Published online December 23, 2020. doi:10.1007/s00330-020-07622-x
6. Loffi M, Regazzoni V, Toselli M, et al. Incidence and characterization of acute pulmonary embolism in patients with SARS-CoV-2 pneumonia: A multicenter Italian experience. *PLoS One*. 2021;16(1):e0245565. doi:10.1371/journal.pone.0245565
7. Palmisano A, Scotti GM, Ippolito D, et al. Chest CT in the emergency department for suspected COVID-19 pneumonia. *Radiol Med*. Published online November 9, 2020. doi:10.1007/s11547-020-01302-y
8. Ai T, Yang Z, Hou H, et al. Correlation of Chest CT and RT-PCR Testing in Coronavirus Disease 2019 (COVID-19) in China: A Report of 1014 Cases. *Radiology*. Published online February 26, 2020:200642. doi:10.1148/radiol.2020200642
9. Hecht HS, Cronin P, Blaha MJ, et al. 2016 SCCT/STR guidelines for coronary artery calcium scoring of noncontrast noncardiac chest CT scans: A report of the Society of Cardiovascular Computed Tomography and Society of Thoracic Radiology. *Journal of Cardiovascular Computed Tomography*. 2017;11(1):74-84. doi:10.1016/j.jcct.2016.11.003
10. Yano Y, O'Donnell CJ, Kuller L, et al. Association of Coronary Artery Calcium Score vs Age With Cardiovascular Risk in Older Adults: An Analysis of Pooled Population-Based Studies. *JAMA Cardiol*. 2017;2(9):986. doi:10.1001/jamacardio.2017.2498
11. Jacobs PC, Prokop M, van der Graaf Y, et al. Comparing coronary artery calcium and thoracic aorta calcium for prediction of all-cause mortality and cardiovascular events on low-dose non-gated computed tomography in a high-risk population of heavy smokers. *Atherosclerosis*. 2010;209(2):455-462. doi:10.1016/j.atherosclerosis.2009.09.031
12. Walsh CR, Larson MG, Kupka MJ, et al. Association of aortic valve calcium detected by electron beam computed tomography with echocardiographic aortic valve disease and with calcium deposits in the coronary arteries and thoracic aorta. *The American Journal of Cardiology*. 2004;93(4):421-425. doi:10.1016/j.amjcard.2003.10.035
13. Colombi D, Bodini FC, Petrini M, et al. Well-aerated Lung on Admitting Chest CT to Predict Adverse Outcome in COVID-19 Pneumonia. *Radiology*. Published online April 17, 2020:201433. doi:10.1148/radiol.2020201433
14. Bernheim A, Mei X, Huang M, et al. Chest CT Findings in Coronavirus Disease-19 (COVID-19): Relationship to Duration of Infection. *Radiology*. 2020;295(3):200463. doi:10.1148/radiol.2020200463
15. Agatston AS, Janowitz WR, Hildner FJ, Zusmer NR, Viamonte M, Detrano R. Quantification of coronary artery calcium using ultrafast computed tomography. *Journal of the American College of Cardiology*. 1990;15(4):827-832. doi:10.1016/0735-1097(90)90282-T
16. McCollough CH, Ulzheimer S, Halliburton SS, Shanneik K, White RD, Kalender WA. Coronary Artery Calcium: A Multi-institutional, Multimanufacturer International Standard for

- Quantification at Cardiac CT. *Radiology*. 2007;243(2):527-538. doi:10.1148/radiol.2432050808
17. Salehi S, Abedi A, Balakrishnan S, Gholamrezanezhad A. Coronavirus Disease 2019 (COVID-19): A Systematic Review of Imaging Findings in 919 Patients. *American Journal of Roentgenology*. Published online March 14, 2020:1-7. doi:10.2214/AJR.20.23034
 18. Grasselli G, Zangrillo A, Zanella A, et al. Baseline Characteristics and Outcomes of 1591 Patients Infected With SARS-CoV-2 Admitted to ICUs of the Lombardy Region, Italy. *JAMA*. 2020;323(16):1574. doi:10.1001/jama.2020.5394
 19. Faust JS, del Rio C. Assessment of Deaths From COVID-19 and From Seasonal Influenza. *JAMA Intern Med*. Published online May 14, 2020. doi:10.1001/jamainternmed.2020.2306
 20. Miedema MD, Dardari ZA, Nasir K, et al. Association of Coronary Artery Calcium With Long-term, Cause-Specific Mortality Among Young Adults. *JAMA Netw Open*. 2019;2(7):e197440. doi:10.1001/jamanetworkopen.2019.7440
 21. Kim J, Budoff MJ, Nasir K, et al. Thoracic aortic calcium, cardiovascular disease events, and all-cause mortality in asymptomatic individuals with zero coronary calcium: The Multi-Ethnic Study of Atherosclerosis (MESA). *Atherosclerosis*. 2017;257:1-8. doi:10.1016/j.atherosclerosis.2016.12.012
 22. Greenland P, Blaha MJ, Budoff MJ, Erbel R, Watson KE. Coronary Calcium Score and Cardiovascular Risk. *Journal of the American College of Cardiology*. 2018;72(4):434-447. doi:10.1016/j.jacc.2018.05.027
 23. Varga Z, Flammer AJ, Steiger P, et al. Endothelial cell infection and endotheliitis in COVID-19. *The Lancet*. 2020;395(10234):1417-1418. doi:10.1016/S0140-6736(20)30937-5
 24. Xu Z, Shi L, Wang Y, et al. Pathological findings of COVID-19 associated with acute respiratory distress syndrome. *The Lancet Respiratory Medicine*. 2020;8(4):420-422. doi:10.1016/S2213-2600(20)30076-X
 25. Danzi GB, Loffi M, Galeazzi G, Gherbesi E. Acute pulmonary embolism and COVID-19 pneumonia: a random association? *European Heart Journal*. 2020;41(19):1858-1858. doi:10.1093/eurheartj/ehaa254
 26. Bonow RO, Fonarow GC, O'Gara PT, Yancy CW. Association of Coronavirus Disease 2019 (COVID-19) With Myocardial Injury and Mortality. *JAMA Cardiol*. Published online March 27, 2020. doi:10.1001/jamacardio.2020.1105
 27. Levi M, Thachil J, Iba T, Levy JH. Coagulation abnormalities and thrombosis in patients with COVID-19. *Lancet Haematol*. Published online May 11, 2020. doi:10.1016/S2352-3026(20)30145-9
 28. Schenker MP, Dorbala S, Hong ECT, et al. Interrelation of Coronary Calcification, Myocardial Ischemia, and Outcomes in Patients With Intermediate Likelihood of Coronary Artery Disease: A Combined Positron Emission Tomography/Computed Tomography Study. *Circulation*. 2008;117(13):1693-1700. doi:10.1161/CIRCULATIONAHA.107.717512
 29. Shaw LJ, Raggi P, Berman DS, Callister TQ. Coronary artery calcium as a measure of biologic age. *Atherosclerosis*. 2006;188(1):112-119. doi:10.1016/j.atherosclerosis.2005.10.010
 30. Vincent J-L, Taccone FS. Understanding pathways to death in patients with COVID-19. *The Lancet Respiratory Medicine*. 2020;8(5):430-432. doi:10.1016/S2213-2600(20)30165-X

Table 1. Comparison between survivors and non-survivors.

Characteristics	Survivors (N=882)	Non-survivors (N=211)	Overall (N=1093)	p-value
Age - median [IQR]	64 [57, 74]	77 [70, 82]	68[58, 76]	<0.001
Gender, male (%)	584 (66.7)	158 (74.9)	742 (68.3)	0.021
BMI - median [IQR]	26.85 [24.00, 29.38]	26.84 [25.59, 29.83]	26.85 [24.11, 29.39]	0.240
Arterial hypertension (%)	441 (50.7)	149 (72.0)	590 (54.8)	<0.001
Diabetes (%)	129 (14.8)	49 (23.7)	178 (16.5)	0.003
Chronic kidney disease (%)	34 (5.6)	15 (16.9)	49 (7.0)	<0.001
Coronary artery disease (%)	28 (4.9)	16 (17.4)	44 (6.6)	<0.001
Previous CABG (%)	10 (1.8)	5 (5.7)	15 (2.3)	0.038
Peripheral artery disease (%)	34 (3.9)	21 (10.1)	55 (5.1)	0.001
Chronic lung disease (%)	71 (8.2)	36 (17.4)	107 (10.0)	<0.001
Active malignancy (%)	37 (4.3)	14 (6.8)	51 (4.7)	0.144
Laboratory data at admission				
Hemoglobin g/dl - median [IQR]	13.9 [12.5, 14.9]	13.2 [11.9, 14.4]	13.8 [12.4, 14.8]	<0.001
White blood cells/mm ³ - median [IQR]	6580.00 [4900.00, 9290.00]	7250.00 [5457.50, 10965.00]	6730.00 [5000.00, 9667.50]	0.001

Creatinine mg/dL - median [IQR]	0.95 [0.80, 1.17]	1.23 [0.97, 1.74]	0.99 [0.81, 1.24]	<0.001
HS-TnI ng/L - median [IQR]	10.00 [5.30, 18.30]	31.15 [9.65, 175.97]	11.20 [6.00, 31.65]	0.001
LDH mg/dl - median [IQR]	354.00 [261.25, 460.50]	460.50 [323.00, 603.50]	369.00 [272.25, 491.00]	<0.001
CRP mg/L - median [IQR]	10.80 [4.90, 19.60]	14.30 [8.37, 21.40]	11.55 [5.40, 20.11]	0.001
Laboratory data during the hospitalization				
IL-6 pg/ml - median [IQR]	53.70 [23.27, 211.25]	141.00 [68.20, 368.70]	60.20 [24.80, 233.00]	0.004
D-dimer ng/ml - median [IQR]	1.74 [0.72, 4.82]	3.06 [1.16, 20.00]	1.85 [0.77, 5.33]	0.005
Radiological findings				
Coronary Artery Calcium (CAC)				
CAC presence (%)	554 (62.8)	180 (85.3)	734 (67.2)	<0.001
n. of calcified coronary arteries - median [IQR]	1.00 [0.00, 2.00]	2.00 [1.00, 3.00]	1.00 [0.00, 3.00]	<0.001
CAC Agatston				
Total CAC - mean (SD)	206.80 (424.13)	467.76 (570.92)	257.18 (467.37)	<0.001
Left main - mean (SD)	25.30 (51.77)	56.00 (65.00)	31.23 (55.87)	<0.001
Left anterior descending - mean (SD)	101.90 (199.99)	208.72 (260.74)	122.52 (217.07)	<0.001
Left circumflex - mean (SD)	47.49 (101.85)	94.43 (128.70)	56.52 (109.05)	<0.001
Right coronary artery - mean (SD)	58.69 (134.16)	131.22 (177.12)	56.52 (109.05)	<0.001
CAC volume				
Total CAC mm ³ - mean (SD)	207.77 (406.81)	487.79 (565.34)	261.93 (455.28)	<0.001
Left main mm ³ - mean (SD)	23.63 (47.96)	52.83 (60.09)	29.27 (51.80)	<0.001
Left anterior descending mm ³ - mean (SD)	92.85 (172.18)	196.66 (233.23)	112.89 (189.89)	<0.001
Left circumflex mm ³ - mean (SD)	53.58 (115.26)	109.81 (147.91)	112.89 (189.89)	<0.001
Right coronary artery mm ³ - mean (SD)	72.94 (170.08)	168.33 (229.32)	91.30 (186.69)	<0.001
Thoracic Aorta Calcium (TAC)				
TAC Agatston - mean (SD)	1834.90 (3761.25)	4688.82 (5363.72)	2379.38 (4262.79)	<0.001
TAC volume mm ³ - mean (SD)	1487.63 (2973.19)	3786.71 (4225.57)	1926.25 (3370.72)	<0.001
Aortic Valve Calcium (AVC)				
AVC Agatston - mean (SD)	111.70 (282.15)	337.38 (414.97)	155.50 (324.67)	<0.001
AVC volume mm ³ - mean (SD)	98.27 (250.74)	322.45 (390.90)	141.78 (296.76)	<0.001
Lung involvement				
Well aerated lung volume cm ³ - mean (SD)	2528.42 (1371.50)	1790.26 (1109.39)	2386.34 (1356.24)	<0.001
Pneumonia scoring				<0.001
Absent (%)	16 (1.8)	0 (0.0)	16 (1.5)	
(<25%) (%)	288 (32.7)	31 (14.7)	319 (29.2)	
(25-50%) (%)	399 (45.3)	106 (50.2)	505 (46.2)	
(50-75%) (%)	151 (17.1)	64 (30.3)	215 (19.7)	
(>75%) (%)	27 (3.1)	10 (4.7)	37 (3.4)	
Left pleural effusion mm - mean (SD)	1.33 (3.78)	1.31 (3.75)	1.33 (3.77)	0.926
Right pleural effusion mm - mean (SD)	1.67 (4.90)	1.59 (4.80)	1.66 (4.88)	0.830
Pericardial effusion mm - mean (SD)	0.23 (0.93)	0.28 (1.03)	0.24 (0.95)	0.430
Complications during the hospitalization				
MACCE				0.001

None (%)	341 (86.1)	52 (77.6)	393 (84.9)	
Cerebral stroke (%)	9 (2.3)	3 (4.5)	12 (2.6)	
Acute coronary syndrome (%)	1 (0.3)	5 (7.5)	6 (1.3)	
Pulmonary embolism (%)	36 (9.1)	7 (10.4)	43 (9.3)	
Peripheral embolization (%)	9 (2.3)	0 (0.0)	9 (1.9)	
Orotracheal intubation (%)	119 (13.5)	36 (17.1)	155 (14.2)	0.188

IQR=interquartile range, SD=standard deviation, BMI=Body mass index, LDH=Lactate dehydrogenase, CPR=C-reactive protein, MACCE=major adverse cardiac and cerebrovascular events; HS-TnI=high-sensitivity troponin I, NIV=noninvasive ventilation

Table 2. Independent predictors of mortality at multivariate analysis - the impact coronary artery calcium volume on in-hospital death

UNIVARIABLE	HR	95 CI	p-value	MULTIVARIABLE	HR	95 CI	p-value
Age	4.169	3.281 - 5.299	<0.001	Age	3.261	2.538 - 4.189	<0.001
Gender, male	1.381	1.009 - 1.891	0.044	Gender, male	1.738	1.126 - 2.682	0.013
White blood cells/mm ³	1.371	1.167 - 1.61	<0.001	White blood cells/mm ³	1.134	1.013 - 1.269	0.028
Creatinine mg/dl	1.814	1.63 - 2.018	<0.001	Creatinine mg/dl	1.419	1.288 - 1.564	<0.001
Well areaded lung volume cm ³	0.451	0.359 - 0.567	<0.001	Well areaded lung volume cm ³	0.417	0.368 - 0.473	<0.001
CAC mm ³	1.25	1.184 - 1.318	<0.001	CAC mm ³	1.308	1.046 - 1.637	0.019
Arterial hypertension	2.199	1.623 - 2.98	0.001	Arterial hypertension	1.203	1.05 - 1.378	0.008
Active malignancy	1.587	0.906 - 2.779	0.107	-	-	-	-
CPR mg/L	1.092	0.945 - 1.261	0.232	-	-	-	-
Pericardial effusion	1.14	0.664 - 1.958	0.635	-	-	-	-
Orotracheal intubation	1.199	0.837 - 1.718	0.322	-	-	-	-

HR Hazard ratio; CI confidence interval; CAC coronary artery calcium.; AUC area under the ROC curve, CPR=c-protein reactive

The CAC variable in the model is a categorical variable derived from the ROC curve of coronary artery calcium volume values for the outcome mortality.

Table 3. Independent predictors of mortality at multivariate analysis - the impact of total thoracic calcium on in-hospital death

UNIVARIABLE	HR	95 CI	p-value	MULTIVARIABLE	HR	95 CI	p-value
Age	4.169	3.281 - 5.299	<0.001	Age	2.783	2.127 - 3.643	<0.001
Gender, male	1.381	1.009 - 1.891	0.044	Gender, male	1.804	1.174 - 2.771	0.007
White blood cells/mm ³	1.371	1.167 - 1.61	<0.001	White blood cells/mm ³	1.155	1.046 - 1.274	0.004
Creatinine (mg/dl)	1.814	1.63 - 2.018	<0.001	Creatinine (mg/dl)	1.411	1.294 - 1.539	<0.001
Well areaed lung volume cm ³	0.451	0.359 - 0.567	<0.001	Well areaed lung volume cm ³	0.395	0.347 - 0.449	<0.001
TTC mm ³	1.397	1.304 - 1.496	0.001	TTC mm ³	1.975	1.200 - 3.251	0.007
Arterial hypertension	2.199	1.623 - 2.98	0.001	-			
Active malignancy	1.587	0.906 - 2.779	0.107	-			
CPR	1.092	0.945 - 1.261	0.232	-			
Pericardial effusion	1.14	0.664 - 1.958	0.635	-			
Orotracheal intubation	1.199	0.837 - 1.718	0.322	-			

HR Hazard ratio; CI confidence interval; TTC: Total thoracic calcium, AUC area under the ROC curve, CPR=c-protein reactive

The TTC variable in the model is a categorical variable derived from the ROC curve of total thoracic calcium volume values for the outcome mortality.

Table 4. Population description according to the identified coronary artery calcium volume cut-off value (= 335.48).

	CAC \leq cut-off (N=868)	CAC $>$ cut-off (N=225)	Overall (N=1093)	p-value
Age - median [IQR]	64.00 [56.00, 73.00]	77.00 [71.00, 83.00]	68.00 [58.00, 76.00]	<0.001
Gender, male (%)	569 (66.0)	173 (76.9)	742 (68.3)	0.002
BMI (median [IQR])	26.85 [24.13, 29.40]	26.74 [23.96, 29.38]	26.85 [24.11, 29.39]	0.825
Arterial hypertension (%)	429 (50.2)	161 (72.5)	590 (54.8)	<0.001
Diabetes (%)	119 (13.9)	59 (26.6)	178 (16.5)	<0.001
Chronic kidney disease (%)	31 (5.4)	18 (14.2)	49 (7.0)	0.002
Chronic coronary artery disease (%)	19 (3.6)	25 (18.7)	44 (6.6)	<0.001
Previous CABG (%)	4 (0.8)	11 (8.6)	15 (2.3)	<0.001
Peripheral artery disease (%)	27 (3.2)	28 (12.6)	55 (5.1)	<0.001
Chronic lung disease (%)	70 (8.2)	37 (16.7)	107 (10.0)	<0.001
Active malignancy (%)	34 (4.0)	17 (7.7)	51 (4.7)	0.032
Laboratory data at admission				
Hemoglobin (mg/dl) - median [IQR]	13.90 [12.50, 14.90]	13.30 [12.00, 14.40]	13.80 [12.40, 14.80]	<0.001
White blood cells/mm ³ - median [IQR]	6620.00 [4900.00, 9290.00]	7250.00 [5427.50, 11337.50]	6730.00 [5000.00, 9667.50]	0.002
Creatinine mg/dl - median [IQR]	0.96 [0.79, 1.19]	1.13 [0.92, 1.54]	0.99 [0.81, 1.24]	<0.001
TnI HS ng/L- median [IQR]	10.00 [5.30, 28.50]	15.00 [9.80, 48.00]	11.20 [6.00, 31.65]	0.022
LDH mg/dl- median [IQR]	369.00 [272.75, 497.00]	368.00 [272.50, 472.75]	369.00 [272.25, 491.00]	0.693
CPR mg/L- median [IQR]	11.66 [5.43, 20.16]	10.90 [5.29, 19.86]	11.55 [5.40, 20.11]	0.615
Laboratory during the hospitalization				
IL-6 pg/ml - median [IQR]	55.50 [22.30, 236.00]	82.05 [39.03, 186.53]	60.20 [24.80, 233.00]	0.203
D-dimer ng/ml - median [IQR]	1.76 [0.73, 5.39]	2.18 [0.97, 4.24]	1.85 [0.77, 5.33]	0.376
Radiological findings				
Calcifications present (%)	509 (58.6)	225 (100.0)	734 (67.2)	<0.001
Number of calcified coronary artery - median [IQR]	1.00 [0.00, 2.00]	3.00 [3.00, 3.00]	1.00 [0.00, 3.00]	<0.001
TAC Agatston - mean (SD)	1287.34 (2957.15)	6648.70 (5677.91)	2379.38 (4262.79)	<0.001

TAC calcium volume (mm ³)- mean (SD)	1042.83 (2306.75)	5380.02 (4479.02)	1926.25 (3370.72)	<0.001
AVC Agatston - mean (SD)	86.26 (247.78)	429.94 (431.50)	155.50 (324.67)	<0.001
AVC Volume (mm ³) - mean (SD)	76.59 (217.55)	400.14 (408.06)	141.78 (296.76)	<0.001
TTC - median [IQR]	224.38 [21.20, 1051.87]	5146.77 [2726.08, 12412.07]	503.77 [44.58, 2684.59]	<0.001
Lung involvement				
Well aerated lung volume (cm ³)- mean (SD)	2387.35 (1377.13)	2382.45 (1275.55)	2386.34 (1356.24)	0.962
Pneumonia scoring (%)				0.963
Absent	13 (1.5)	3 (1.3)	16 (1.5)	
<25%	252 (29.1)	67 (29.8)	319 (29.2)	
25-50%	404 (46.6)	101 (44.9)	505 (46.2)	
50-75%	170 (19.6)	45 (20.0)	215 (19.7)	
>75%	28 (3.2)	9 (4.0)	37 (3.4)	
Left pleural effusion (mm)- mean (SD)	1.13 (3.51)	2.08 (4.55)	1.33 (3.77)	0.001
Right pleural effusion (mm) - mean (SD)	1.37 (4.48)	2.77 (6.07)	1.66 (4.88)	<0.001
Pericardial effusion (mm)- mean (SD)	0.20 (0.88)	0.37 (1.17)	0.24 (0.95)	0.016
In-hospital complications				
MACCE (%)				0.386
None	321 (84.9)	72 (84.7)	393 (84.9)	
Cerebral stroke	10 (2.6)	2 (2.4)	12 (2.6)	
Acute coronary syndrome	3 (0.8)	3 (3.5)	6 (1.3)	
Pulmonary Embolism	36 (9.5)	7 (8.2)	43 (9.3)	
Peripheral embolism	8 (2.1)	1 (1.2)	9 (1.9)	
In-hospital outcomes				
Hospitalization <24h (%)	25 (2.9)	0 (0.0)	25 (2.3)	0.005
Hospitalization without oxygen support (%)	58 (6.7)	8 (3.6)	66 (6.0)	0.085
Hospitalization with oxygen support (%)	249 (28.7)	63 (28.0)	312 (28.5)	0.869
Hospitalization with NIV (%)	162 (18.7)	32 (14.2)	194 (17.7)	0.142
Orotracheal intubation (%)	136 (15.7)	19 (8.4)	155 (14.2)	0.005
In-hospital death (%)	125 (14.4)	86 (38.2)	211 (19.3)	<0.001
Death after oro-tracheal intubation (%)	27 (3.1)	9 (4.0)	36 (3.3)	0.529

IQR=interquartile range, SD= standard deviation, LDH=Lactate dehydrogenase, CPR=c-protein reactive, MACCE= major adverse cardiac and cerebrovascular events; Tni-HS= high-sensitivity troponin I, NIV=noninvasive ventilation, CAC= coronary artery calcium, TAC=thoracic aorta calcium, AVC=Aortic Valve Calcium.

Table 5 Population description according to the identified total thoracic calcium volume cut-off values (=1067.78)

	TTC ≤ cut-off (N=675)	TTC > cut-off (N=418)	Overall (N=1093)	p-value
Age - median [IQR]	60.50 [54.00, 69.00]	77.00 [70.00, 82.00]	68.00 [58.00, 76.00]	<0.001
Gender, male - (%)	455 (67.9)	287 (68.8)	742 (68.3)	0.789
Arterial hypertension - (%)	283 (42.8)	307 (74.0)	590 (54.8)	<0.001
Diabetes - (%)	76 (11.5)	102 (24.6)	178 (16.5)	<0.001
Chronic kidney disease - (%)	23 (4.9)	26 (11.2)	49 (7.0)	0.004
Chronic coronary artery disease - (%)	13 (3.0)	31 (13.1)	44 (6.6)	<0.001
Peripheral artery disease - (%)	16 (2.4)	39 (9.4)	55 (5.1)	<0.001
Previous CABG - (%)	4 (0.9)	11 (4.8)	15 (2.3)	0.004
Chronic lung disease - (%)	38 (5.8)	69 (16.6)	107 (10.0)	<0.001
Active malignancy - (%)	25 (3.8)	26 (6.3)	51 (4.7)	0.076
Laboratory data				
Hemoglobin (mg/dl) - (median [IQR])	14.00 [12.70, 15.00]	13.20 [12.00, 14.40]	13.80 [12.40, 14.80]	<0.001
White blood cells/mm ³ - (median [IQR])	6610.00 [4900.00, 9570.00]	6910.00 [5190.00, 9765.00]	6730.00 [5000.00, 9667.50]	0.130
Creatinine mg/dl - median [IQR]	0.95 [0.79, 1.14]	1.08 [0.88, 1.42]	0.99 [0.81, 1.24]	<0.001
TnI HS ng/ml - median [IQR]	8.00 [4.53, 18.00]	14.80 [9.00, 49.00]	11.20 [6.00, 31.65]	0.001
LDH mg/dl - median [IQR]	374.00 [272.00, 498.00]	359.00 [274.50, 486.00]	369.00 [272.25, 491.00]	0.432
CRP mg/L - median [IQR]	11.70 [5.31, 21.09]	11.23 [5.50, 18.77]	11.55 [5.40, 20.11]	0.499
Laboratory data during the hospitalization				
IL-6 pg/ml- median [IQR]	54.85 [21.57, 244.25]	73.00 [34.40, 157.55]	60.20 [24.80, 233.00]	0.372
D-dimer ng/ml- median [IQR]	1.81 [0.68, 5.66]	1.95 [1.00, 4.05]	1.85 [0.77, 5.33]	0.394
Radiological findings				
Calcification				
Coronary calcification	346 (51.3)	388 (92.8)	734 (67.2)	<0.001
Number of calcified coronary vessels	1.00 [0.00, 2.00]	3.00 [2.00, 3.00]	1.00 [0.00, 3.00]	<0.001
CAC Agatston - mean (SD)	53.37 (180.37)	586.29 (586.18)	257.18 (467.37)	<0.001

CAC Volume (mm ³)- mean (SD)	56.70 (156.85)	592.34 (569.86)	261.93 (455.28)	<0.001
TAC Agatston - mean (SD)	253.85 (865.11)	5771.07 (5223.41)	2379.38 (4262.79)	<0.001
TAC volume (mm ³) - mean (SD)	219.48 (697.46)	4649.75 (4082.09)	1926.25 (3370.72)	<0.001
AVC Agatston- mean (SD)	27.83 (139.33)	358.31 (418.58)	155.50 (324.67)	<0.001
AVC Volume (mm ³) - mean (SD)	21.83 (102.07)	332.32 (390.43)	141.78 (296.76)	<0.001
Lung involment				
Well aerated lung volume - mean (SD)	2417.84 (1413.00)	2335.41 (1259.09)	2386.34 (1356.24)	0.330
Left pleural effusion (mm) - mean (SD)	1.12 (3.49)	1.67 (4.16)	1.33 (3.77)	0.019
Right pleural effusion (mm) - mean (SD)	1.26 (4.31)	2.31 (5.63)	1.66 (4.88)	0.001
Pericardial effusion (mm)- mean (SD)	0.16 (0.78)	0.36 (1.15)	0.24 (0.95)	0.001
Pneumonia - (%)				0.549
0	12 (1.8)	4 (1.0)	16 (1.5)	
<25%	189 (28.0)	130 (31.2)	319 (29.2)	
25-50%	312 (46.2)	193 (46.3)	505 (46.2)	
50-75%	140 (20.7)	75 (18.0)	215 (19.7)	
>75%	22 (3.3)	15 (3.6)	37 (3.4)	
Pericardial effusion - mean (SD)	0.16 (0.78)	0.36 (1.15)	0.24 (0.95)	0.001
Left pleural effusion - mean (SD)	1.12 (3.49)	1.67 (4.16)	1.33 (3.77)	0.019
Right pleural effusion - mean (SD)	1.26 (4.31)	2.31 (5.63)	1.66 (4.88)	0.001
In-hospital complications				
MACCE (%)				0.143
None	256 (85.3)	137 (84.0)	393 (84.9)	
Cerebral stroke	4 (1.3)	8 (4.9)	12 (2.6)	
Acute coronary syndrome	3 (1.0)	3 (1.8)	6 (1.3)	
Pulmonary Embolism	31 (10.3)	12 (7.4)	43 (9.3)	
Peripheral embolism	6 (2.0)	3 (1.8)	9 (1.9)	
In-hospital outcomes				
Hospitalization < 24h (%)	24 (3.6)	1 (0.2)	25 (2.3)	<0.001
Hospitalization without oxygen support (%)	48 (7.1)	18 (4.3)	66 (6.0)	0.067
Hospitalization with oxygen support (%)	191 (28.3)	121 (28.9)	312 (28.5)	0.836
Hospitalization with NIV (%)	134 (19.9)	60 (14.4)	194 (17.7)	0.022
Orotracheal intubation (%)	113 (16.7)	42 (10.0)	155 (14.2)	0.002
In-hospital death (%)	63 (9.3)	148 (35.4)	211 (19.3)	<0.001
Death after oro-tracheal intubation (%)	17 (2.5)	19 (4.5)	36 (3.3)	0.081

IQR=interquartile range, SD= standard deviation, LDH=Lactate dehydrogenase, CPR=c-protein reactive, MACCE= major adverse cardiac and cerebrovascular events; Tni-HS= high-sensitivity troponin I, NIV=noninvasive ventilation, TTC total thoracic calcium, CAC= coronary artery calcium, TAC=thoracic aorta calcium, AVC=Aortic Valve Calcium.

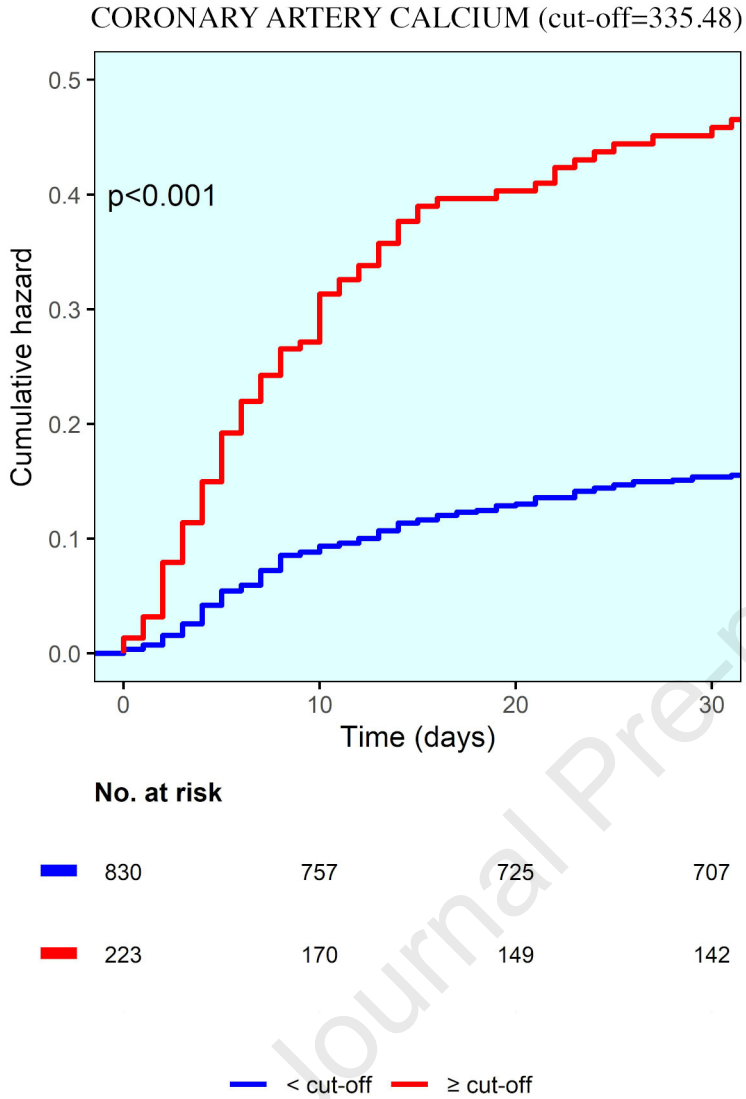
Figures legends

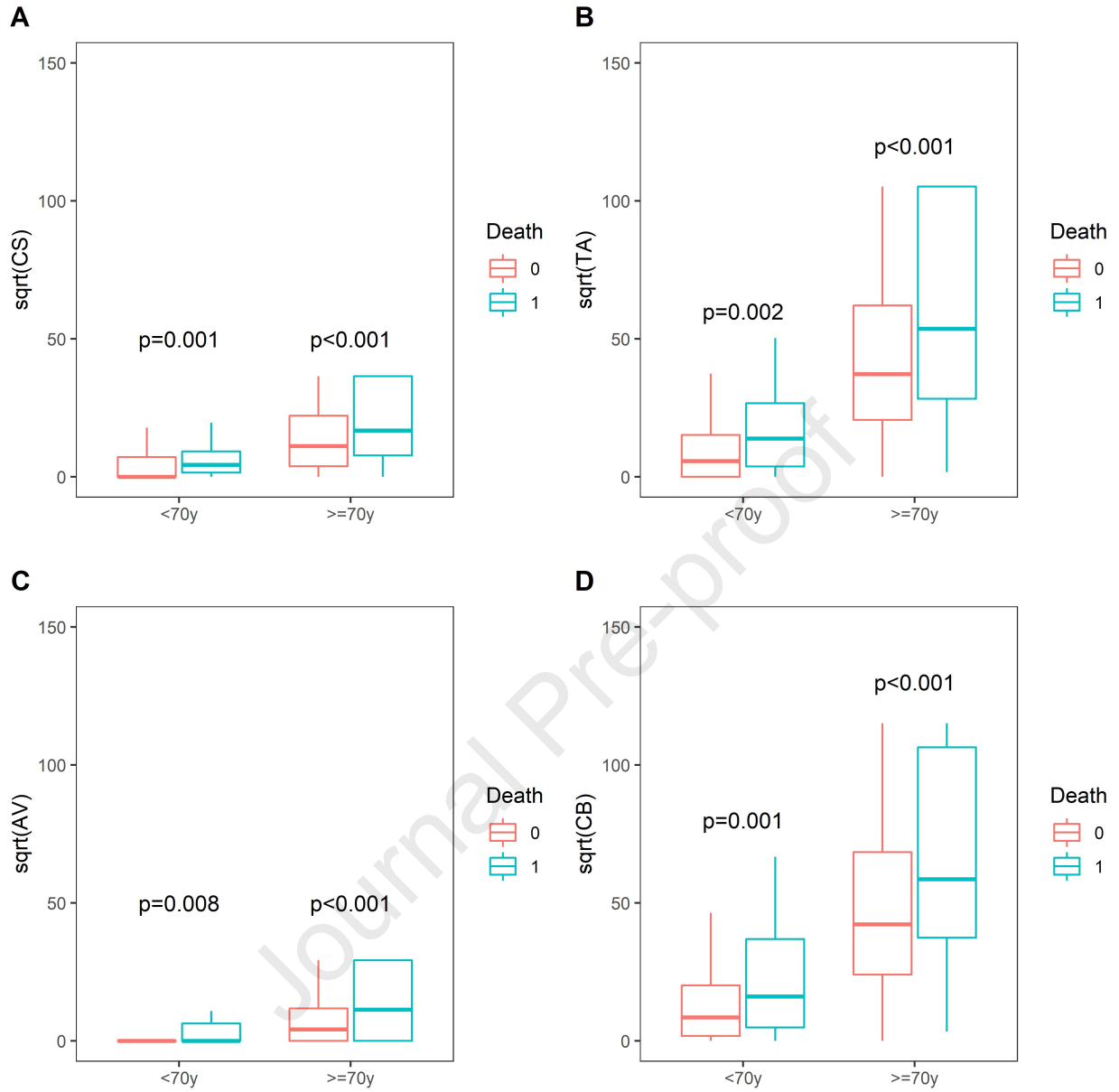
Figure 1. Kaplan-Maier curve showing cumulative hazard correlated with coronary artery calcium

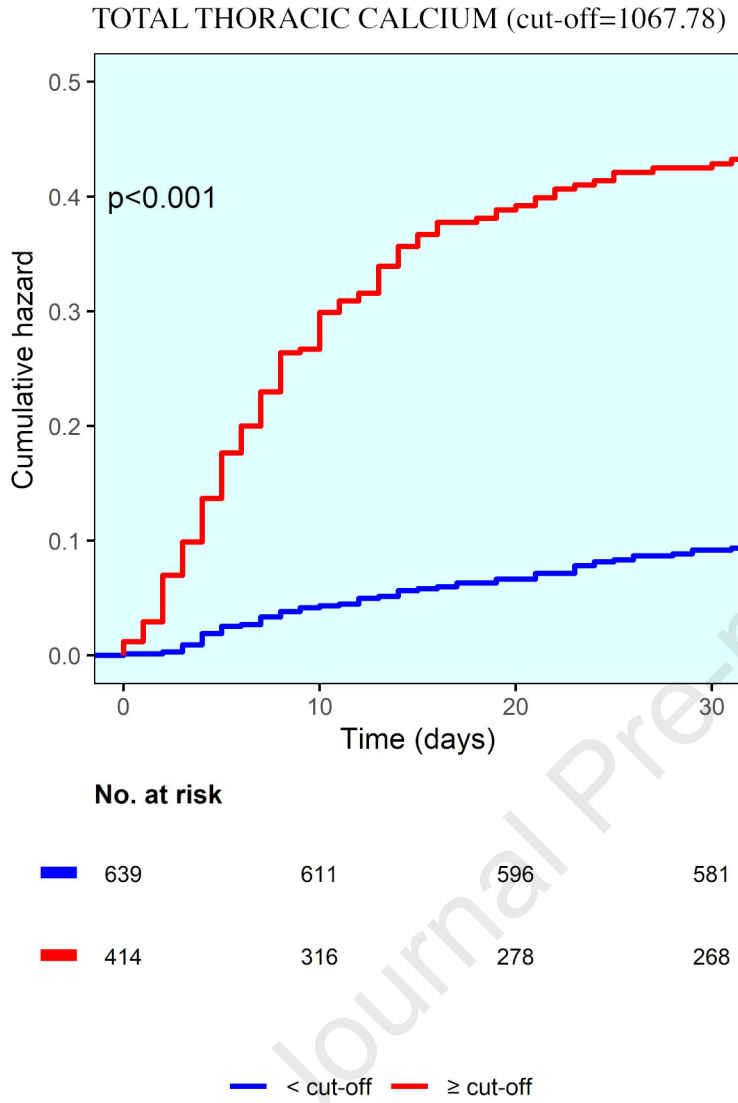
Figure 2. Mortality differences stratified for age (\leq / $>$ 70 years) according to coronary (A), thoracic aorta (B), aortic valve (C) calcium and total thoracic calcium(D).

Figure 3. Kaplan-Maier curve showing cumulative hazard correlated with total thoracic calcium

Journal Pre-proof







Summary:

In the present study coronary artery and total thoracic calcium (defined as the composite of coronary artery, thoracic aorta and aortic valve calcium volume) resulted a powerful tool for in-hospital mortality risk stratification in COVID-19 patients. Cardiovascular calcifications may represent a bystander of an impaired vascular reserve, microvascular and endothelial, but also a sign of vascular senescence. Therefore, it can be considered an index of biological frailty, likely more accurate than age. These findings have a practical application. Indeed, coronary artery and total thoracic calcium can be quantified on non-gated chest-CT and may represent additional imaging biomarkers for risk stratification in COVID-19 patients.

Ravenna 2/1/2021

The authors have no conflicts of interest to declare.

No funding to disclose.

The Corresponding Author,

Francesco Giannini, M.D.

Interventional Cardiology Unit, GVM Care & Research Maria Cecilia Hospital
Via Corriera, 1, 48033 Cotignola, Ravenna, Italy
Phone number: +39-3337535151
E-mail address: giannini_fra@yahoo.it