

See discussions, stats, and author profiles for this publication at: <https://www.researchgate.net/publication/341598203>

Case Study of COVID-19 in India Reported Data at 15 May

Conference Paper · May 2020

DOI: 10.1056/NEJMoa2020316

CITATIONS

0

READS

4,071

4 authors:



Rohit Gupta

Dr. B. R. Ambedkar University

7 PUBLICATIONS 0 CITATIONS

SEE PROFILE



Anuradha Gupta

Dr. B. R. Ambedkar University

2 PUBLICATIONS 0 CITATIONS

SEE PROFILE



Kush Gupta

Dr. B. R. Ambedkar University, Agra

2 PUBLICATIONS 0 CITATIONS

SEE PROFILE



Mohit Gupta

Dr. Bhim Rao Ambedkar University, Agra

28 PUBLICATIONS 109 CITATIONS

SEE PROFILE

Some of the authors of this publication are also working on these related projects:



Plant Physiology [View project](#)



Nanomaterial [View project](#)

Case Study of COVID-19 in India Reported Data at 15 May

Rohit Gupta¹, Anuradha², Kush Gupta³ and Mohit Gupta⁴

¹Department of Physics, Institute of Basic Sciences, Dr. Bhimrao Ambedkar University, Khandari Campus, Agra-282001.

^{2,3}Department of Botany and Zoology, School of Life Sciences, Dr. Bhimrao Ambedkar University, Khandari Campus, Agra-282001.

⁴Department of Chemistry, Institute of Basic Sciences, Dr. Bhimrao Ambedkar University, Khandari Campus, Agra-282001.

rohitguptaagraindia@gmail.com

8755158884

Abstract: In present research, we analysis given data statically by taking four points, total cases, total death, new cases and new death. Here we mention day by day Indian situation affect of COVID-19. Discussing about affect of Indian economy, people's daily life by corona viruses, average death and Indian future picture after affect of corona virus. Government bodies plans, need of PPE. And peak point of corona virus in Indian.

Keyword: COVID-19, PPE, SARS-CoV and MERS-CoV.

Introduction:

Corona viruses are RNA viruses belonging to genus Corona virus and family *Coronaviridae*. It is now divided into four genera, Alpha corona virus, Beta corona virus, Gamma corona virus and Delta corona virus and beta corona viruses are further divided into two groups: Severe acute respiratory syndrome Corona viruses (SARS-CoV) and Middle East Respiratory Syndrome Corona viruses (MERS-CoV) [1,4]. The currently affected virus name is severe acute respiratory syndrome corona virus 2 (SARS-CoV-2). WHO named the disease 2019-n CoV acute respiratory disease originated from Wuhan (China). SARS-CoV-2, there are six known corona viruses in humans: HCoV-229E, HCoV-OC43, SARS-CoV, HCoV-NL63, HCoV-HKU1, and MERS-CoV [3]. There are various diseases caused by these viruses in mammals, birds and human also [5]. The Corona Virus Disease (COVID-19) is the novel disease of respiratory system. It has been spread all over the world. The infected person presented with fever, tiredness, and dry cough. Some patients may have aches and pains, nasal congestion, runny nose, sore throat or diarrhoea but some cases no symptoms are appeared in infected person. The numbers of infected persons are increased day by day. It has been spread all over the world.

Case Analysis: The figure is drawn by Indian data, total cases, total death, new cases and new death with date at 30-January to 15-May till by using statically data analysis method [5].

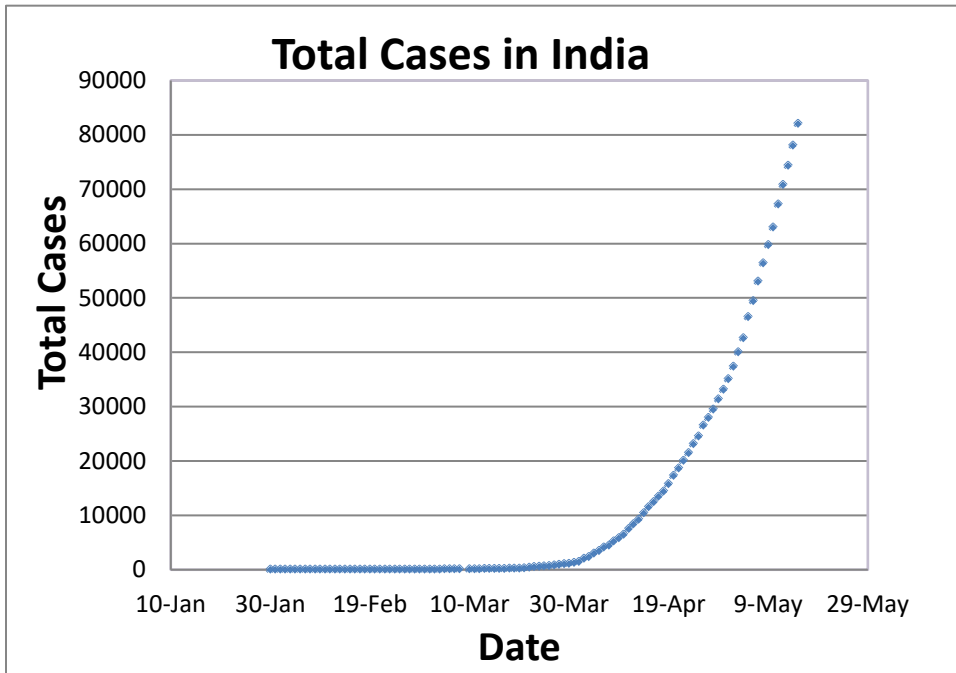


Fig. 1: Show the day wise (between 20 days gap) number of cases COVID-19 positive person in India.

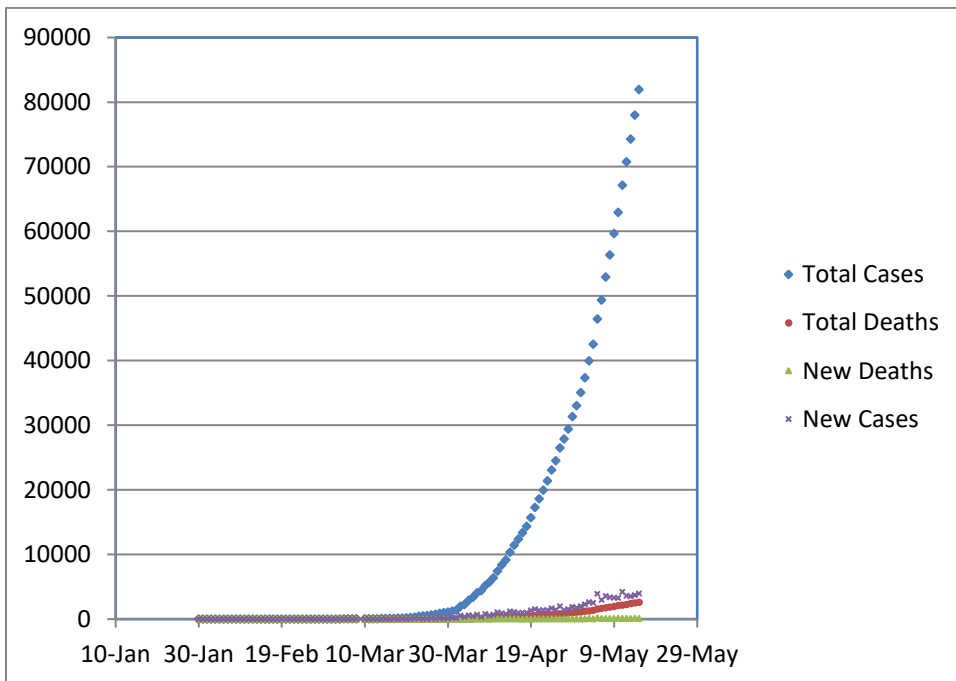


Fig. 2: Show the day wise (between 20 days gap) increment of cases COVID-19 positive person and death in India.

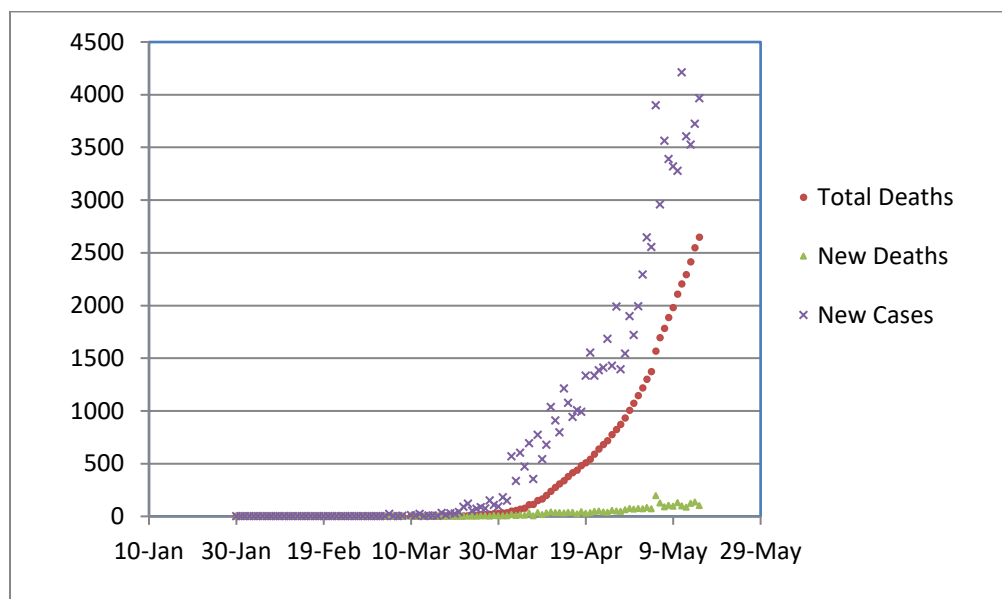


Fig. 3: Show clear picture of figure second, the day wise (between 20 days gap) increment of cases COVID-19 positive person and total death in India.

Results and Dissections: On the basis of statically data analysis by given Indian data, some results also find. First figure slope show total cases increases very rapidly. But it is not a peak point, may be possible see peak point after few month or long time. It is depend on Indian government rules and common people. How take it lightly or strongly, using PPE and follow safety guideline against COVID-19.

In second figure, there are four slopes. Which show total cases, total death, new cases and new death, average death rate at 15-May-2020 till is 3.7990. It is sometimes low to other European and American continent. This change may be possible Indian environments, Indian doctor's treatments plans, Corona warriors defend satiations plans and governing bodies plans.

In figure second and third, slope of new cases and new death increases rapidly, it may be dangerous for India. Which is directly affected by Indian people's daily life, Indian economy and Indian governing bodies. After affect of the COVID-19, we get to see big changes; we should not be surprised for this.

References:

1. Li Q, Guan X, Wu P, Wang X, Zhou L, Tong Y, et al. Early transmission dynamics in Wuhan, China, of novel coronavirus-infected pneumonia. N Engl J Med. 2020. <https://doi.org/10.1056/NEJMoa2001316>.

2. Stertz S, Reichelt M, Spiegel M, Kuri T, Martinez Sobrido L, Garcia Sastre A, et al. The intracellular sites of early replication and budding of SARS-coronavirus. *Virology* 2007; 361: 304-15 <https://goo.gl/LfTwph>
3. SasmitaPoudel Adhikari¹, Sha Meng¹, Yu-Ju Wu¹, Yu-Ping Mao², Rui-Xue Ye¹, Qing-Zhi Wang¹, Chang Sun¹., Sean Sylvia³, Scott Rozelle⁴, Hein Raat⁵ and Huan Zhou¹, Epidemiology, causes, clinical manifestation and diagnosis, prevention and control of coronavirus disease (COVID-19) during the early outbreak period: a scoping review, (2020) 9:29 <https://doi.org/10.1186/s40249-020-00646-x>
4. TugbaTaskin Tok, Gizem Tatar, Structures and Functions of Coronavirus.
5. [Oxford Martin School, University of Oxford](http://ourworldindata.org/covid-testing#source-information-country-by-country): <http://ourworldindata.org/covid-testing#source-information-country-by-country>.